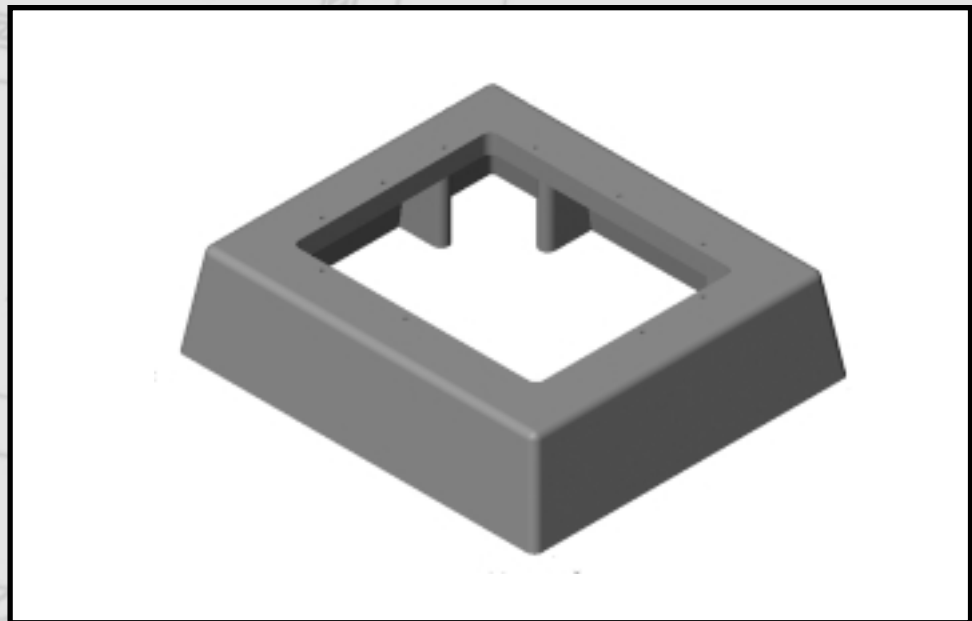


Spacers 4", 10"

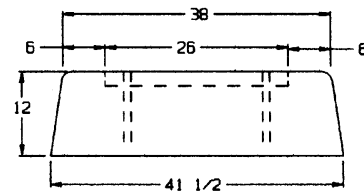
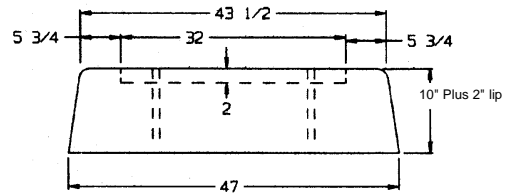
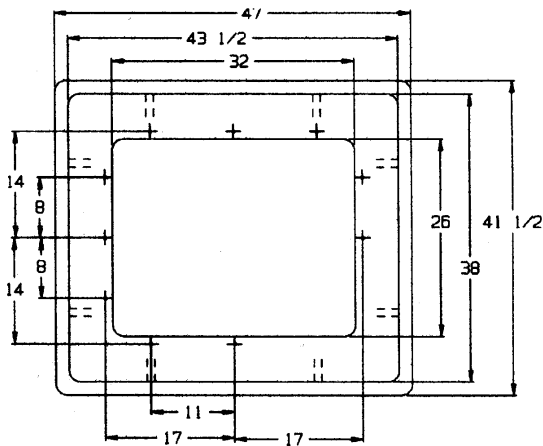
PRODUCT FEATURES

- Where grade changes require deeper box pads.
- Mounts to standard box pads with top surface of 37" x 43".
- Stainless steel and bronze mounting hardware to meet ANSI C5712.28-1988 specifications.
- External ribs are molded to all sides for greater side-wall and vertical strength.
- Heavy-duty reinforced fiberglass construction, stress areas strengthened with nonhydroscopic laminated reinforcing materials.
- Smooth exterior surface for tamper resistance.
- Exterior color: Munsell #7GY3.29/1.5 Green.
- Gel-coated exterior for superior protection against UV radiation and corrosion resistance.



	A	B	C	D x E = TOP
Model Number:	Length	Width	Height	Openings
HL-45S-04	37 1/2	43	4	31 3/4 x 26
HL-45S-10	38 1/4	43 3/4	12	31 3/8 x 25 5/8
HL-45S-04 SO	37 1/2	43	4	24 x 22
HL-45S-10 SO	38 1/4	43 3/4	12	24 x 22

Dimensions (inches) for FBP 36-42-12-AAEX:



Dimensions for other spacers:

