

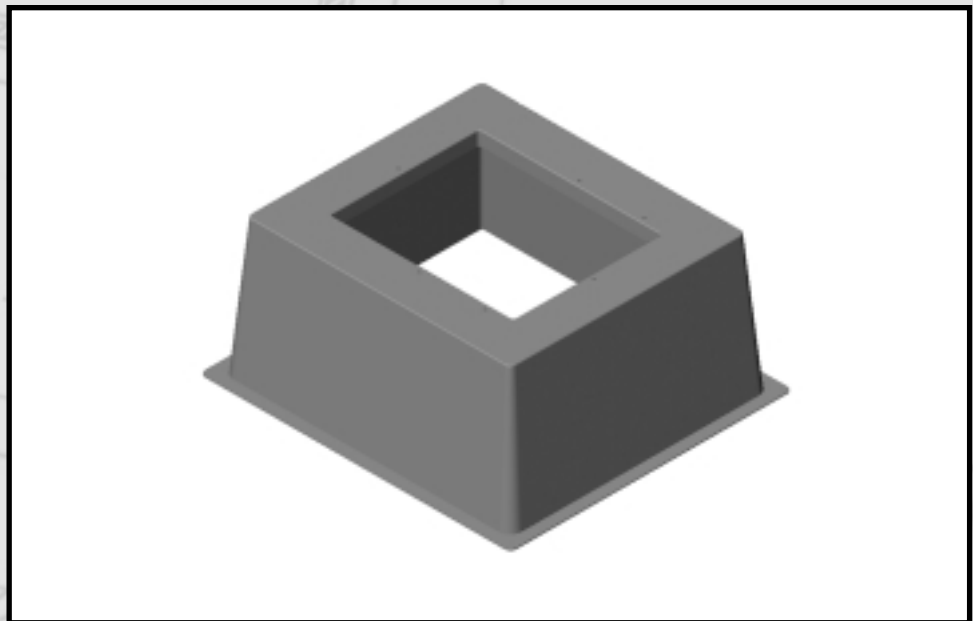
# HL-24-M Transformer Box Pad

## PRODUCT FEATURES

- High strength and consistent quality. Produced using the match metal compression molding process. The industry's only 24" box pad with a glass preform.
- Lightweight. Easily handled by two installers.
- Readily available from inventory.
- UV radiation protected.
- Optimizes storage space. Box pads nest.
- *Exceeds* Northeast Underground test guidelines. Test results available on request.
- RUS accepted.

### Optional Feature:

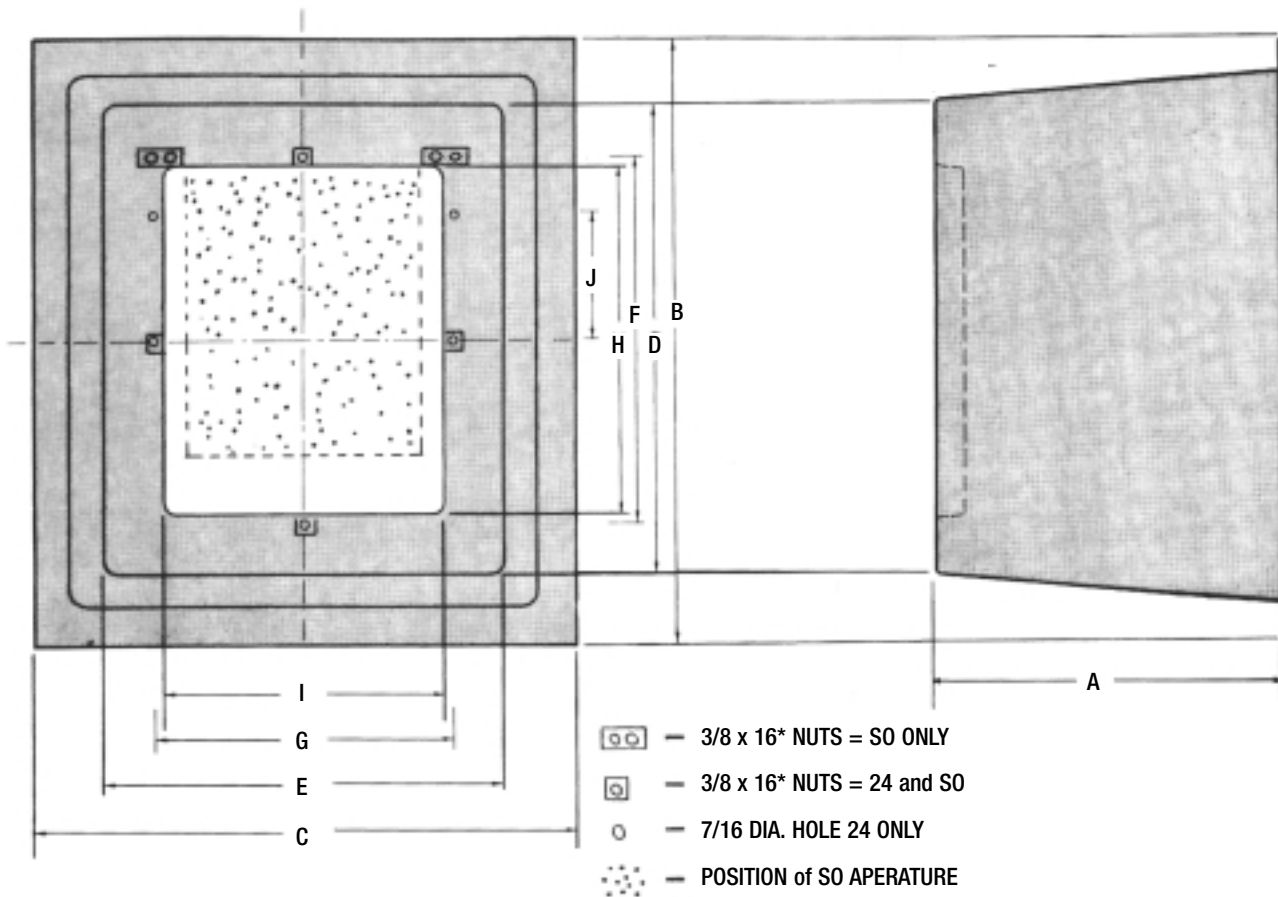
- Choice of non skid fiberglass covers with penta head or fargo lock mechanisms.



## Dimensions:

CAT. NO.	OVERALL			TOP		**ENCAPSULATED			APERATURE	
	Height (A)	Width (B)	Length (C)	Width (D)	Length (E)	NUT POSITION			Width (H)	Length (I)
HL-24-M	24	54¼	49½	43	37½	34	28	11½	32	26
* HL-24-SOM	24	54¼	49½	43	37½	34	28	11½	24¾	22¾

Aperture dimensions (inches) are measured at the intersection of projected adjacent planes.



## Optional Covers:

**HL-45-2EF** BOX PAD COVER, ELECTRIC FARGO STUD

**HL-45-2TS** BOX PAD COVER, TELEPHONE SCREW

**HL-45-2EP** BOX PAD COVER, ELECTRIC PENTA HARDWARE

**HL-45-2ES** BOX PAD COVER, ELECTRIC SCREW

Additional hole opening available in the new millennium line. See pages 2-3.  
Additional sizes available. See pages 20-21.