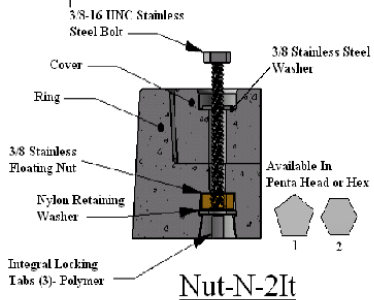
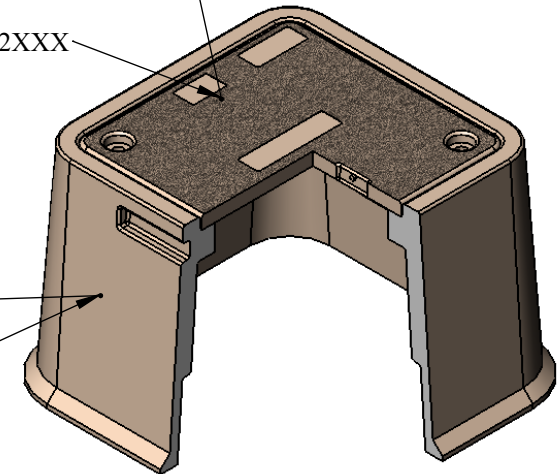


Polymer Concrete Cover  
Cover Only: CHC1212XXX

Polymer Concrete Box  
Box Only: PTB121212



LOAD RATING LOGO

Rev.B was for dimensions change on cover

**PROPRIETARY AND CONFIDENTIAL**  
THE INFORMATION CONTAINED IN THIS DRAWING IS THE SOLE PROPERTY OF HIGHLINE PRODUCTS. ANY REPRODUCTION IN PART OR AS A WHOLE WITHOUT THE WRITTEN PERMISSION OF HIGHLINE PRODUCTS IS PROHIBITED.

UNLESS OTHERWISE SPECIFIED:

DIMENSIONS ARE IN INCHES  
TOLERANCES:  $\pm 1/8"$   
FRACTIONAL  $\pm$   
ANGULAR: MACH  $\pm$  BEND  $\pm$   
TWO PLACE DECIMAL  $\pm$   
THREE PLACE DECIMAL  $\pm$

INTERPRET GEOMETRIC TOLERANCING PER:

MATERIAL:  
Polymer Concrete

DO NOT SCALE DRAWING

NAME: SK  
DATE: 05.24.11

DRAWN/ENG.  
CHECKED  
HIGHLINE APPR.  
MFG APPR.

BOX WEIGHT= 37 lbs.  
COVER WEIGHT= 10 lbs.  
UNITS PER PALLET= # 20

**HIGHLINE PRODUCTS**

All Polymer Pull Box ( Tapered )  
Model PTA 121212  
Tier8 (S) 12,000 lbs. , Tier15 (H) 22,500 lbs.  
Tier22 (X) 33,800 lbs.

SIZE	DWG. NO.	REV
<b>A</b>	PTA121212	<b>B</b>
SCALE: NTS	SHEET 1 OF 1	