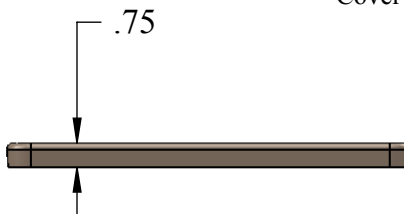
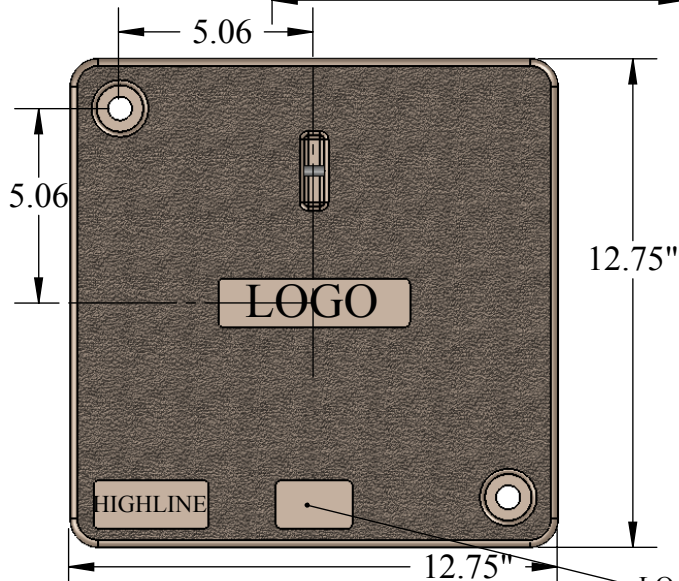
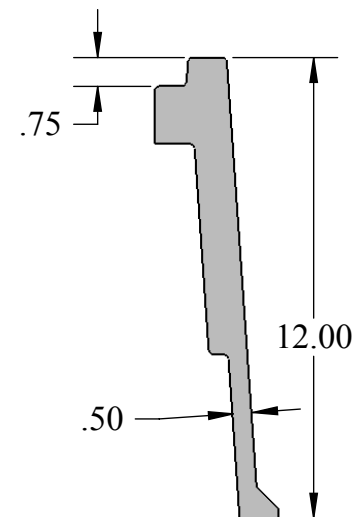
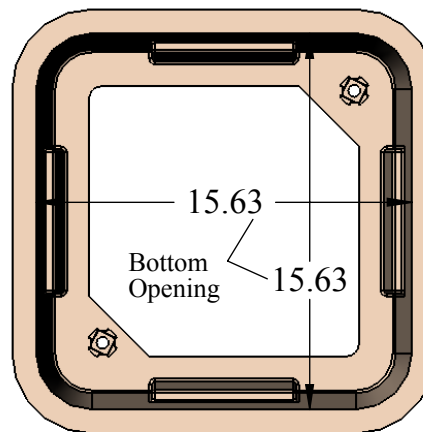
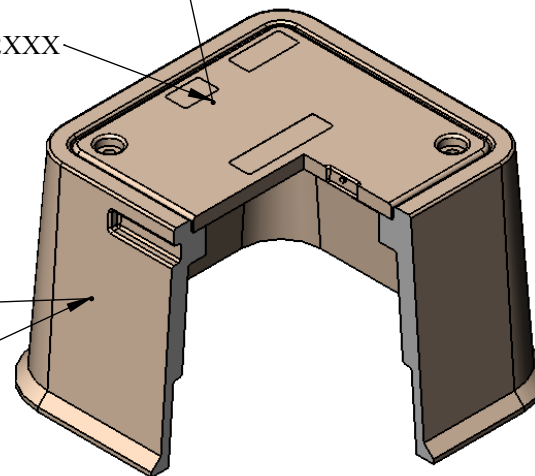


BOTTOM VIEW



Polymer Concrete Cover

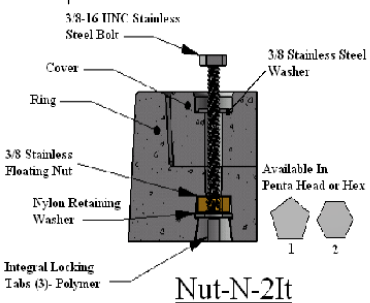
Cover Only: CHC1212XXX



Polymer Concrete Box

Box Only: PTB121212

LOAD RATING LOGO



Nut-N-2It

PROPRIETARY AND CONFIDENTIAL
 THE INFORMATION CONTAINED IN THIS DRAWING IS THE SOLE PROPERTY OF HIGHLINE PRODUCTS. ANY REPRODUCTION IN PART OR AS A WHOLE WITHOUT THE WRITTEN PERMISSION OF HIGHLINE PRODUCTS IS PROHIBITED.

UNLESS OTHERWISE SPECIFIED:

DIMENSIONS ARE IN INCHES
 TOLERANCES: +/- 1/8"
 FRACTIONAL ±
 ANGULAR: MACH ± BEND ±
 TWO PLACE DECIMAL ±
 THREE PLACE DECIMAL ±

INTERPRET GEOMETRIC TOLERANCING PER:
 MATERIAL: Polymer Concrete
 FINISH

DO NOT SCALE DRAWING

NAME DATE

DRAWN/ENG. SK 07.15.09

CHECKED

HIGHLINE APPR.

MFG APPR.

Q.A.

COMMENTS:

BOX WEIGHT= 37 lbs.

COVER WEIGHT= 10 lbs.

UNITS PER PALLET= # 20



All Polymer Pull Box (Tapered)
 Model PTA 121212
 Tier8 (S) 12,000 lbs. , Tier15 (H) 22,500 lbs.
 Tier22 (X) 33,800 lbs.

SIZE	DWG. NO.	REV
A	PTA121212	A

SCALE: NTS SHEET 1 OF 1