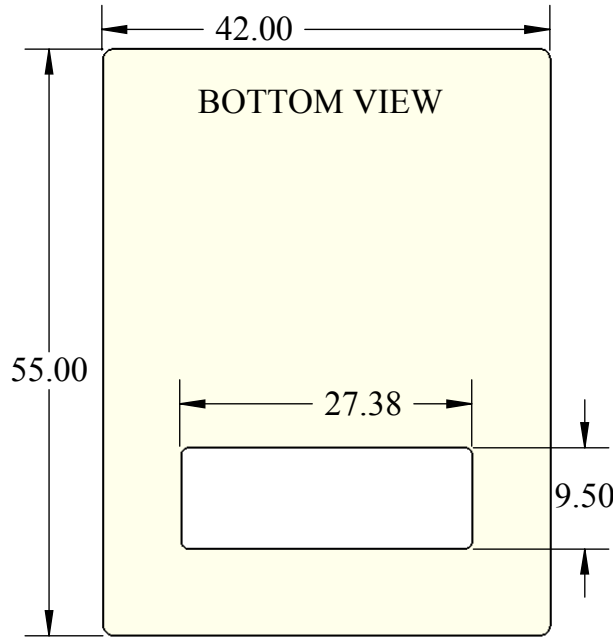
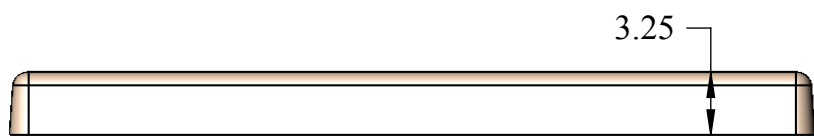
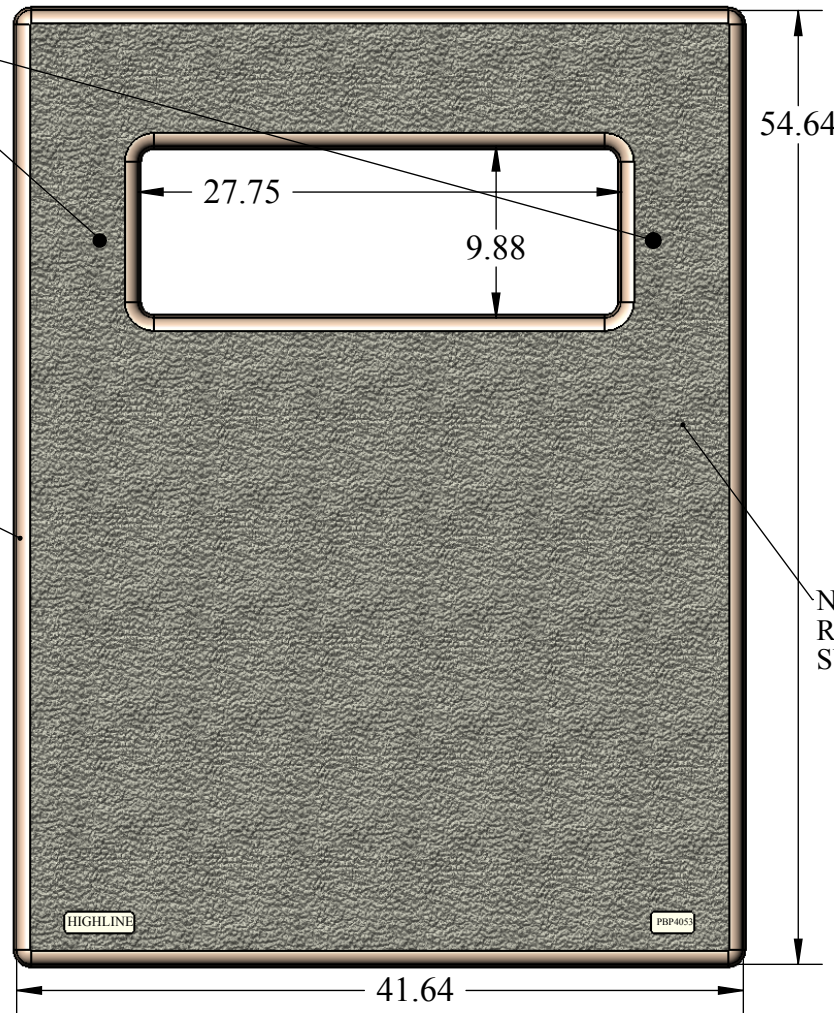


TOP VIEW

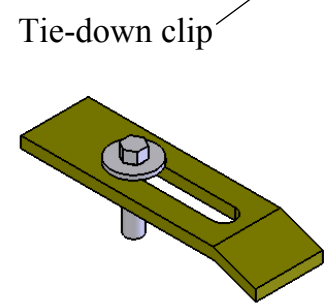


(2) 3/8 Star Inserts  
(Standard)

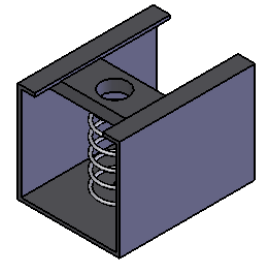
Fiberglass  
Reinforced  
Polymer  
Concrete



OPTIONS



Unistrut w/ Spring Nut  
in place of insert



UNLESS OTHERWISE SPECIFIED:

DIMENSIONS ARE IN INCHES  
TOLERANCES: +/- 1/8"  
FRACTIONAL ±  
ANGULAR: MACH ± BEND ±  
TWO PLACE DECIMAL ±  
THREE PLACE DECIMAL ±

**PROPRIETARY AND CONFIDENTIAL**  
THE INFORMATION CONTAINED IN THIS  
DRAWING IS THE SOLE PROPERTY OF  
HIGHLINE PRODUCTS. ANY  
REPRODUCTION IN PART OR AS A WHOLE  
WITHOUT THE WRITTEN PERMISSION OF  
HIGHLINE PRODUCTS IS  
PROHIBITED.

INTERPRET GEOMETRIC  
TOLERANCING PER:  
MATERIAL:  
Polymer Concrete  
FINISH

DO NOT SCALE DRAWING

NAME	DATE
SK	07.29.09
CHECKED	
HIGHLINE APPR.	
MFG APPR.	
Q.A.	
COMMENTS:	
UNITS PER PALLET # 5	



Polymer Flat Pad  
Model PBP405303-1028

SIZE	DWG. NO.	REV
A	PBP405303-1028	A
SCALE: NTS		SHEET 1 OF 1